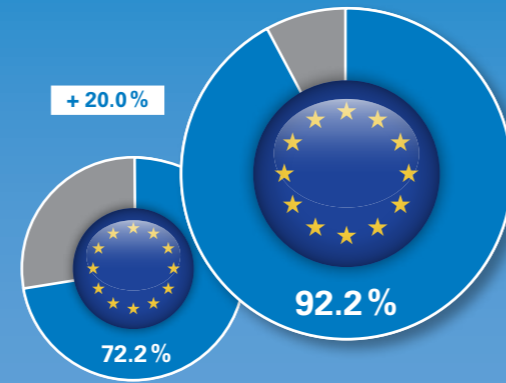
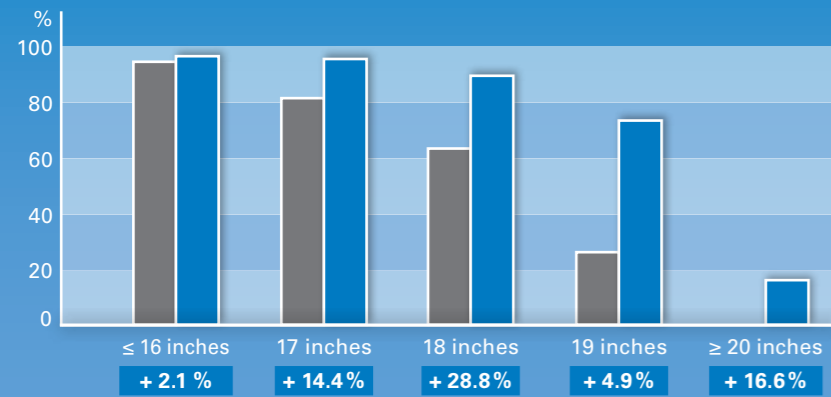


# Semperit market coverage for Europe

Semperit's market coverage increased significantly with the introduction of the Speed-Life 2. Particularly in the UHP segment, Semperit is optimally positioned for further growth, thanks to the new sizes.

Source: Calculation based on 2013 ERM - Passenger Car Standard Summer Tyres



Increase in market coverage in the Passenger Car Summer Tyres segment with the introduction of new Speed-Life 2 sizes

Increase in market coverage in the UHP segment (≥ 17")

## Product range

Dimensions	EU tyre label values				Dimensions	EU tyre label values				Dimensions	EU tyre label values			
			dB					dB					dB	
185/55 R 15 H	C	C	70	2	205/55 R 17 V XL FR	C	C	72	2	225/35 R 18 Y XL FR	C	C	72	2
185/55 R 15 V	C	C	70	2	205/50 R 17 V XL FR	C	C	72	2	235/45 R 18 Y XL FR	C	C	72	2
195/55 R 15 H	C	C	71	2	205/50 R 17 Y XL FR	C	C	72	2	235/40 R 18 Y XL FR	C	C	72	2
195/55 R 15 V	C	C	71	2	205/45 R 17 V XL FR	C	C	72	2	245/45 R 18 Y XL FR	C	C	72	2
195/50 R 15 H	C	C	71	2	205/45 R 17 Y XL FR	C	C	72	2	245/40 R 18 Y XL FR	C	C	72	2
195/50 R 15 V	C	C	71	2	205/40 R 17 Y XL FR	C	C	72	2	255/45 R 18 Y XL FR	C	C	73	2
195/55 R 16 T	C	C	71	2	215/55 R 17 Y FR	C	C	71	2	255/35 R 18 Y XL FR	C	C	73	2
195/55 R 16 H	C	C	71	2	215/55 R 17 Y XL FR	C	C	72	2	265/35 R 18 Y XL FR	C	C	73	2
195/55 R 16 V	C	C	71	2	215/50 R 17 Y FR	C	C	71	2	255/40 R 19 Y XL FR	C	C	73	2
195/50 R 16 V XL	C	C	72	2	215/50 R 17 Y XL FR	C	C	72	2	255/35 R 19 Y XL	C	C	73	2
195/45 R 16 V XL	C	C	72	2	215/45 R 17 V FR	C	C	71	2	245/40 R 19 Y XL FR	C	C	72	2
205/55 R 16 H	C	C	71	2	215/45 R 17 Y FR	C	C	71	2	245/35 R 19 Y XL FR	C	C	72	2
205/55 R 16 V	C	C	71	2	215/45 R 17 Y XL FR	C	C	72	2	235/40 R 19 Y XL FR	C	C	72	2
205/55 R 16 V XL	C	C	72	2	215/40 R 17 Y XL FR	C	C	72	2	235/35 R 19 Y XL FR	C	C	72	2
205/55 R 16 Y	C	C	71	2	225/55 R 17 Y XL FR	C	C	72	2	225/35 R 19 Y XL FR	C	C	72	2
205/50 R 16 V	C	C	71	2	225/45 R 17 V XL FR	C	C	72	2	255/35 R 20 Y XL FR	C	C	73	2
205/50 R 16 Y	C	C	71	2	225/45 R 17 Y FR	C	C	71	2					
205/45 R 16 V FR	C	C	71	2	225/45 R 17 Y XL FR	C	C	72	2					
205/45 R 16 Y FR	C	C	71	2	225/50 R 17 V XL FR	C	C	72	2	<b>SUV tyres</b>			dB	
215/55 R 16 H XL	C	C	72	2	225/50 R 17 Y FR	C	C	71	2	235/55 R 17 V FR	C	C	71	2
215/55 R 16 V	C	C	71	2	225/50 R 17 Y XL FR	C	C	72	2	235/55 R 17 Y XL FR	C	C	72	2
215/55 R 16 Y	C	C	71	2	235/45 R 17 Y FR	C	C	71	2	225/55 R 18 V	C	C	71	2
215/55 R 16 Y XL	C	C	72	2	235/45 R 17 Y XL FR	C	C	72	2	235/50 R 18 V XL FR	C	C	72	2
215/45 R 16 V XL FR	C	C	72	2	245/45 R 17 Y FR	C	C	71	2	255/55 R 18 Y XL FR	C	C	73	2
225/55 R 16 V	C	C	71	2	245/45 R 17 Y XL FR	C	C	72	2	255/55 R 19 V XL FR	C	C	73	2
225/55 R 16 Y	C	C	71	2	245/40 R 17 Y FR	C	C	71	2	255/50 R 19 Y XL FR	C	C	73	2
225/55 R 16 Y XL	C	C	72	2	225/45 R 18 Y XL FR	C	C	72	2	275/40 R 20 Y XL FR	C	C	73	2
225/50 R 16 Y	C	C	71	2	225/40 R 18 Y XL FR	C	C	72	2	295/35 R 21 Y XL	C	C	75	2

EU tyre label categories: = Fuel consumption, = Wet grip, dB = Value in decibels, = Class  
You can find further information at [www.semperit.com](http://www.semperit.com)

■ = NEW

**SEMPERIT**

Entire Performance.



**SEMPERIT**

Entire Performance.



# Enjoy alpine driving.

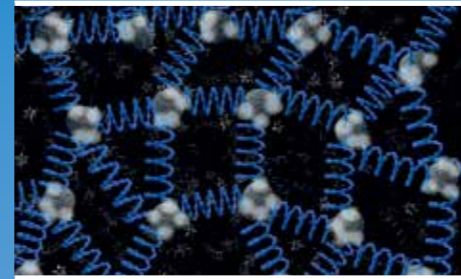
The new Semperit Speed-Life 2.



# Speed-Life 2 – The agile

Optimal all-round properties for safe driving throughout summer.

## Technical highlights



### Excellent braking performance on wet roads

The large number of sipe edges enhances water dispersion, thereby increasing the contact surface for transfer of force to the road.

**Your advantage:** short braking distance even on wet surfaces.

### Outstanding handling in dry conditions

The solid centre rib increases lateral rigidity in the centre section of the tread, resulting in reduced tread deformation.

**Your advantage:** high steering precision through direct transfer of force, even at small steering angles.

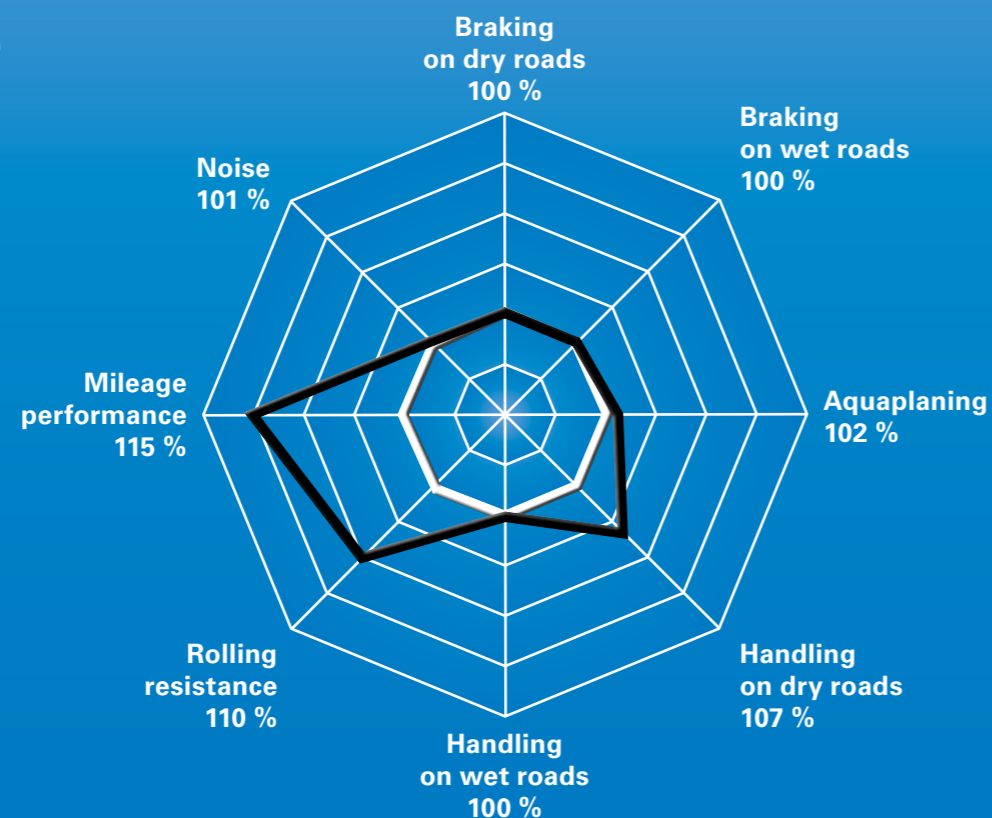
### Improved rolling resistance for better mileage

The anchoring technology of the new blue silica compound strengthens the cohesion between the silica and the rubber polymer. This reduces energy loss and increases wear resistance.

**Your advantage:** less rolling resistance and more mileage at constant good braking performance.

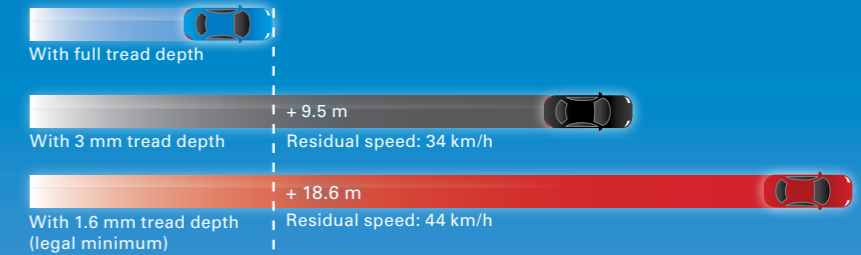
## Tyre performance

Speed-Life 2  
Speed-Life = 100 %



## Safety factor tread depth.

Keep an eye on your tread depth, because reduced tread depth not only increases your braking distance, but also significantly increases the danger of aquaplaning. With a tread depth of less than 3 mm, things start getting dangerous.



Braking from 80 km/h on wet road surface.\*

\* The braking differences provided here are based on a Mercedes C-Class vehicle with a tyre size of 205/55 R 16 V (over 1,000 braking tests). The graphics shown are for illustration purposes only. The braking distance for each individual vehicle is dependent on the type of vehicle, the brakes and the tyres used, as well as the road surface. (Source: Continental Reifen Deutschland GmbH)

## Semperit Maintenance Technology



### Semperit Performance Indicator (SPI)

#### Improved safety through visual tread depth

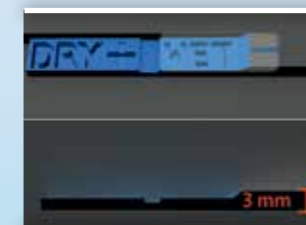
The risk of aquaplaning increases significantly when the tread depth reduces, and the braking distance also increases disproportionately. The **SPI** helps you recognise critical pattern depths and make the correct decision when to change tyres.



### Semperit Alignment Indicator (SAI)

#### Improved cost effectiveness through visual alignment

Incorrect wheel track alignment causes uneven tyre wear and reduces the service life of tyres considerably. The **SAI** enables you to recognise incorrect axle configuration in time. For a longer lifespan of your tyres.



When the tread depth reaches 3 mm, the **WET +** symbol changes to **WET -**, indicating the reduced performance under wet conditions.

Similarly, the **DRY +** symbol changes to **DRY -** when the tread wear limit has almost reached the legal minimum tread pattern depth. A tyre change is now urgently required.

The **SAI** checks the uniformity of wear on both sides of the tyre. During the first 2,000 km, the indicator profile changes with increased tread pattern wear. If the display shows a different profile on the inside of the tyre to the outside, you should have your wheel track alignment checked by your tyre specialist.



Examples that may indicate an incorrect axle adjustment



Examples that may indicate an even tread wear

### SPI and SAI markings on the tyre.

The SPI and SAI markings are located in three places on the tyre, offset by 120° in each case, and always appear together with a marking on the tyre shoulder. This ensures that both indicators are visible from any perspective.