



SPEED-GRIP 3

NEW!



Get a grip this winter.

- Short braking distances on snow-covered surfaces
- High safety when driving on snowy curvy roads
- Short braking distances on icy surface

Semperit. A brand of Continental.

SEMPERIT 

Since 1906.

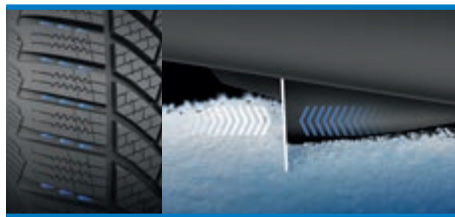
SPEED-GRIP 3 – The winter athlete

Safer and more economical - through technical leadership



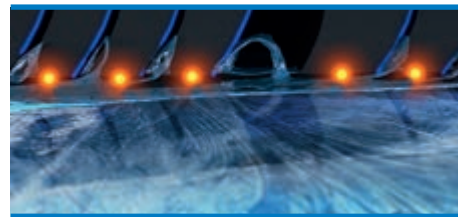
Short braking distances on snow-covered surfaces.

A greater amount of shoulder blocks with numerous large lateral shoulder grooves increase the number of block edges. This leads to reinforced snow-snow friction in the lateral shoulder grooves, achieving more grip on snow and therefore reducing braking distances on snow-covered surfaces.



High safety when driving on snowy curvy roads.

The unique technology makes this tyre especially safe: three snow hooks, placed in each lateral transverse shoulder groove, provide additional gripping edges and thus reinforce directional control in snow. In this way, safety increases when driving on snowy curvy roads.

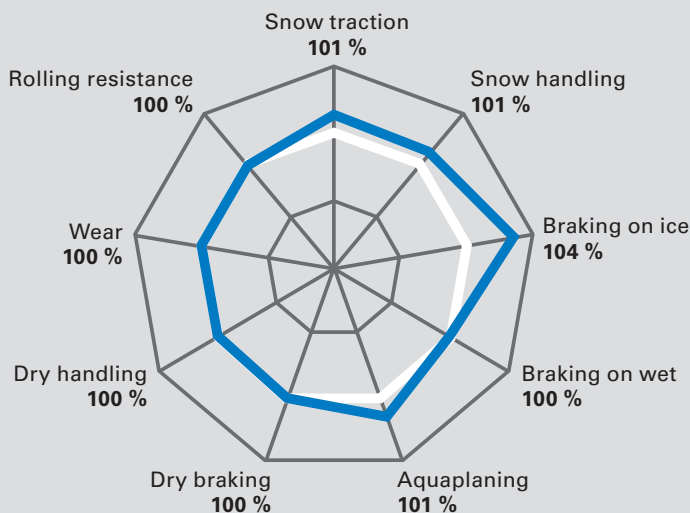


Short braking distances on icy surface.

Numerous wiper edges displace the liquid layer (surface water film) from the tread surface. This improves the grip on ice and reduces the braking distances on icy surfaces.

Tyre performance

■ SPEED-GRIP 3
 ■ SPEED-GRIP 2 = 100%



Product range

Dimensions	EU tyre label values				Dimensions	EU tyre label values				Dimensions	EU tyre label values			
			dB					dB					dB	
PKW					Series 50					Series 40				
Series 55					195/50 R 15 H					225/40 R 18 V XL FR				
185/55 R 15 T	E	C	71	2	195/50 R 16 H XL	E	C	72	2	235/40 R 18 V XL FR	E	C	72	2
185/55 R 15 H XL	E	C	71	2	205/50 R 17 H XL FR	E	C	72	2	245/40 R 18 V XL FR	E	C	72	2
195/55 R 15 H	E	C	72	2	205/50 R 17 V XL FR	E	C	72	2	255/40 R 19 V XL FR	E	C	73	2
195/55 R 16 T	E	C	72	2	215/50 R 17 V XL FR	E	C	72	2	Series 35				
195/55 R 16 H	E	C	72	2	225/50 R 17 V XL FR	E	C	72	2	235/35 R 19 W XL FR	E	C	72	2
205/55 R 16 T	E	C	71	2	225/50 R 17 V XL FR	E	C	72	2	255/35 R 19 V XL FR	E	C	73	2
205/55 R 16 H	E	C	71	2	235/50 R 18 V XL FR	E	C	72	2					
205/55 R 16 H XL	E	C	71	2	Series 45					SUV				
205/55 R 16 V XL	E	C	71	2	205/45 R 17 V XL FR	E	C	72	2	Series 55				
215/55 R 16 H	E	C	72	2	225/45 R 17 H FR	E	C	72	2	235/55 R 17 V XL FR	E	C	72	2
215/55 R 16 H XL	E	C	72	2	225/45 R 17 V XL FR	E	C	72	2	235/55 R 18 H XL FR	E	C	72	2
225/55 R 16 H	E	C	72	2	235/45 R 17 V XL FR	E	C	72	2	255/55 R 18 V XL FR	E	C	73	2
225/55 R 16 H XL	E	C	72	2	245/45 R 17 V XL FR	E	C	72	2	235/55 R 19 V XL FR	E	C	72	2
205/55 R 17 V XL FR	E	C	72	2	225/45 R 18 V XL FR	E	C	72	2	Series 50				
215/55 R 17 V XL FR	E	C	72	2	235/45 R 18 V XL FR	E	C	72	2	255/50 R 19 V XL FR	E	C	73	2
225/55 R 17 H FR	E	C	72	2	245/45 R 18 V XL FR	E	C	72	2	Series 45				
225/55 R 17 V XL FR	E	C	72	2	235/45 R 19 V XL FR	E	C	72	2	275/45 R 20 V XL FR	E	C	73	2
195/55 R 20 H XL	C	C	72	2	245/45 R 19 V XL FR	E	C	72	2					

EU tyre label categories: = Fuel consumption, = Wet grip, dB = Value in decibels, = Class

You can find further information at www.sempert.com

= NEW