



Defy winter.

The new Van-Grip 2.

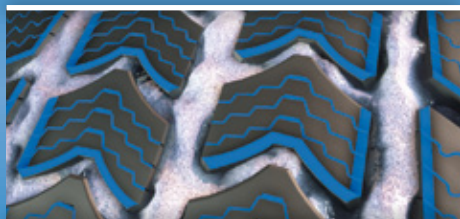
Resilient winter expert with only one goal: to bring every load through snow and ice to your destination. A worthy addition to the alpine proven Semperit winter tyre range.



SEMPERIT 
Entire Performance.

Van-Grip 2 – The resilient

The new directional tread pattern promises improved performance on snow-covered and wet road surfaces, even under heavy load.



Improved snow performance

- High number of tread edges for improved interlocking on snow-covered roads.

Your advantage: significantly improved grip and shorter breaking distances, even under heavy load.



Good aquaplaning performance

- Directional tread pattern with wide grooves for improved water displacement.

Your advantage: safe driving on wet and slushy roads as a result of reduced aquaplaning.



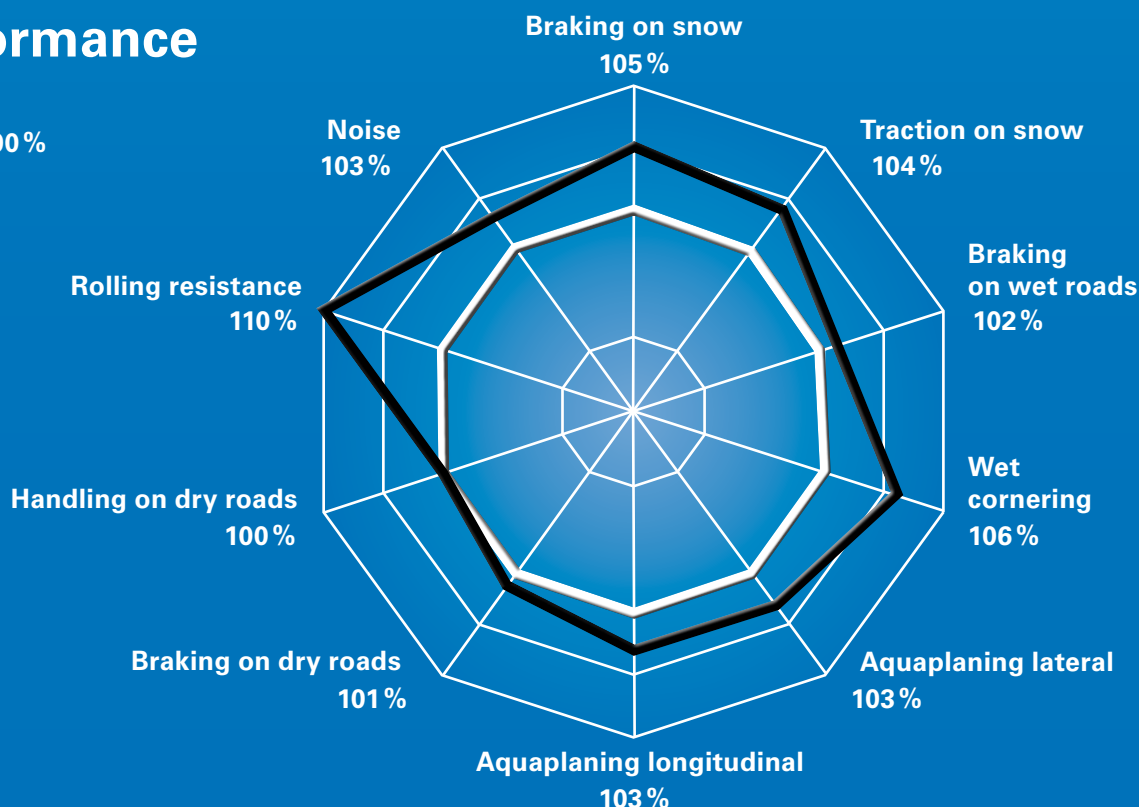
Reduced rolling resistance

- Improved rubber compound for excellent grip and reduced rolling resistance.

Your advantage: lower fuel consumption and therefore very efficient.

Tyre performance

- Van-Grip 2
- Van-Grip = 100%



Product range

Dimensions	EU tyre label values				Dimensions	EU tyre label values				Dimensions	EU tyre label values			
			dB					dB					dB	
185 R 14 C 102/100 Q	E	C	73	2	195/70 R 15 C 104/102 R	E	C	73	2	195/65 R 16 C 104/102 T	E	C	73	2
195/75 R 16 C 107/105 R	E	C	73	2	195/70 R 15 RF 97 T	E	C	72	2	205/65 R 16 C 107/105 T	E	C	73	2
205/75 R 16 C 110/108 R	E	C	73	2	205/70 R 15 C 106/104 R	E	C	73	2	215/65 R 16 C 109/107 R	E	C	73	2
215/75 R 16 C 113/111 R	E	C	73	2	215/70 R 15 C 109/107 R	E	C	73	2	225/65 R 16 C 112/110 R	E	C	73	2
225/75 R 16 C 121/120 R	E	C	73	2	225/70 R 15 C 112/110 R	E	C	73	2	235/65 R 16 C 115/113 R	E	C	73	2
165/70 R 14 C 89/87 R	E	C	73	2	175/65 R 14 C 90/88 T	E	C	73	2	195/60 R 16 C 99/97 T	E	C	73	2

EU tyre label categories: = Fuel consumption, = Wet grip, dB = Value in decibels, = Class
 You can find further information at www.semperit.com